



WEEKLY SALES SUMMARY

Unaudited

Week Ending: 03/28/2009

Texas Lottery Commission
Fiscal Year to Date Sales Comparison
Unaudited

Through the week ending 03/28/2009 (30 weeks)

Sales by Game	FY 2007 *	FY 2008 **	FY 2009	\$ Change		% Change	
				FY 2009 to FY 2007	FY 2009 to FY 2008	FY 2009 to FY 2007	FY 2009 to FY 2008
Instant	\$ 1,650,429,398	\$ 1,637,966,958	\$ 1,599,826,044	\$ -50,603,354	\$ -38,140,914	-3.1%	-2.3%
Lotto Texas	143,128,611	122,361,962	110,552,205	-32,576,406	-11,809,757	-22.8%	-9.7%
Pick 3	182,009,342	166,728,145	165,601,500	-16,407,843	-1,126,645	-9.0%	-0.7%
Pick 3 Sum It Up	-	3,600,861	3,489,517	3,489,517	-111,344	-	-3.1%
Cash 5	51,113,763	44,587,858	41,289,616	-9,824,147	-3,298,242	-19.2%	-7.4%
Texas Two Step	30,728,111	25,323,895	29,960,363	-767,748	4,636,468	-2.5%	18.3%
Mega Millions	110,435,171	99,597,020	106,438,811	-3,996,361	6,841,791	-3.6%	6.9%
Megaplier	24,982,536	23,536,691	24,640,448	-342,088	1,103,757	-1.4%	4.7%
Daily 4	-	24,506,776	25,639,755	25,639,755	1,132,979	-	4.6%
Daily 4 Sum It Up	-	5,697,219	3,175,420	3,175,420	-2,521,800	-	-44.3%
Total	\$ 2,192,826,932	\$ 2,153,907,385	\$ 2,110,613,678	\$ -82,213,255	\$ -43,293,707	-3.7%	-2.0%

* 3 extra days in 2007 ** 2 extra days in 2008

Texas Lottery Commission
Fiscal Year Over Year Change in Sales
Unaudited
FY 2009 Compared to FY 2008

Week	FY 2009 Week Ending	INSTANT TICKETS				ON-LINE GAMES				TOTAL SALES			
		FY 2009	FY 2008	Difference	% change - Cumulative Sales	FY 2009	FY 2008	Difference	% change - Cumulative Sales	FY 2009	FY 2008	Difference	% change - Cumulative Sales
1	9/6/2008**	\$44,890,104	\$62,376,229	(\$17,486,125)	-28.0%	\$14,722,011	\$19,372,224	(\$4,650,213)	-24.0%	\$59,612,115	\$81,748,453	(\$22,136,338)	-27.1%
2	9/13/2008	\$46,309,551	\$52,458,866	(\$6,149,315)	-20.6%	\$13,704,860	\$16,926,163	(\$3,221,303)	-21.7%	\$60,014,411	\$69,385,029	(\$9,370,618)	-20.8%
3	9/20/2008	\$42,923,171	\$49,998,934	(\$7,075,763)	-18.6%	\$12,291,263	\$15,792,283	(\$3,501,020)	-21.8%	\$55,214,434	\$65,791,217	(\$10,576,783)	-19.4%
4	9/27/2008	\$47,042,801	\$49,894,175	(\$2,851,374)	-15.6%	\$14,222,339	\$14,800,514	(\$578,175)	-17.9%	\$61,265,140	\$64,694,689	(\$3,429,549)	-16.2%
5	10/4/2008	\$50,747,162	\$53,486,863	(\$2,739,701)	-13.5%	\$15,784,472	\$16,618,430	(\$833,958)	-15.3%	\$66,531,634	\$70,105,293	(\$3,573,659)	-14.0%
6	10/11/2008	\$49,763,789	\$50,918,020	(\$1,154,231)	-11.7%	\$15,622,498	\$15,601,410	\$21,088	-12.9%	\$65,386,287	\$66,519,430	(\$1,133,143)	-12.0%
7	10/18/2008	\$49,299,053	\$50,532,253	(\$1,233,200)	-10.5%	\$15,167,940	\$15,682,666	(\$514,726)	-11.6%	\$64,466,993	\$66,214,919	(\$1,747,926)	-10.7%
8	10/25/2008	\$49,977,581	\$50,347,450	(\$369,869)	-9.3%	\$14,525,843	\$15,586,516	(\$1,060,673)	-11.0%	\$64,503,424	\$65,933,966	(\$1,430,542)	-9.7%
9	11/1/2008	\$50,346,542	\$53,953,733	(\$3,607,191)	-9.0%	\$14,838,845	\$16,775,983	(\$1,937,139)	-11.1%	\$65,185,387	\$70,729,716	(\$5,544,330)	-9.5%
10	11/8/2008	\$54,860,087	\$53,635,090	\$1,224,997	-7.9%	\$16,057,069	\$15,912,791	\$144,278	-9.9%	\$70,917,156	\$69,547,881	\$1,369,275	-8.3%
11	11/15/2008	\$53,484,812	\$51,254,401	\$2,230,411	-6.8%	\$15,829,819	\$15,797,076	\$32,744	-9.0%	\$69,314,631	\$67,051,477	\$2,263,155	-7.3%
12	11/22/2008	\$52,806,511	\$50,897,817	\$1,908,694	-5.9%	\$16,460,748	\$15,801,720	\$659,028	-7.9%	\$69,267,259	\$66,699,537	\$2,567,722	-6.4%
13	11/29/2008	\$52,199,741	\$53,913,115	(\$1,713,374)	-5.7%	\$17,397,576	\$17,055,505	\$342,072	-7.1%	\$69,597,317	\$70,968,620	(\$1,371,303)	-6.0%
14	12/6/2008	\$56,731,851	\$55,702,697	\$1,029,154	-5.1%	\$20,363,789	\$17,900,717	\$2,463,073	-5.5%	\$77,095,640	\$73,603,414	\$3,492,227	-5.2%
15	12/13/2008	\$54,109,617	\$53,703,516	\$406,101	-4.7%	\$22,952,228	\$17,820,841	\$5,131,387	-3.0%	\$77,061,845	\$71,524,357	\$5,537,488	-4.3%
16	12/20/2008	\$55,777,328	\$57,592,769	(\$1,815,441)	-4.6%	\$15,833,517	\$17,436,233	(\$1,602,716)	-3.4%	\$71,610,845	\$75,029,002	(\$3,418,157)	-4.3%
17	12/27/2008	\$57,597,885	\$57,696,003	(\$98,118)	-4.3%	\$15,851,771	\$14,743,680	\$1,108,091	-2.9%	\$73,449,656	\$72,439,683	\$1,009,973	-4.0%
18	1/3/2009	\$57,582,115	\$57,935,952	(\$353,837)	-4.1%	\$16,900,028	\$15,704,450	\$1,195,578	-2.3%	\$74,482,143	\$73,640,402	\$841,741	-3.7%
19	1/10/2009	\$54,250,945	\$55,360,542	(\$1,109,597)	-4.0%	\$16,203,220	\$15,691,540	\$511,680	-2.0%	\$70,454,165	\$71,052,082	(\$597,917)	-3.5%
20	1/17/2009	\$51,625,339	\$54,920,166	(\$3,294,827)	-4.1%	\$15,701,605	\$16,259,669	(\$558,064)	-2.1%	\$67,326,944	\$71,179,835	(\$3,852,891)	-3.6%
21	1/24/2009	\$52,789,573	\$54,439,890	(\$1,650,317)	-4.1%	\$15,897,473	\$16,691,724	(\$794,251)	-2.2%	\$68,687,046	\$71,131,614	(\$2,444,568)	-3.6%
22	1/31/2009	\$55,453,471	\$57,464,382	(\$2,010,911)	-4.0%	\$16,908,272	\$17,968,227	(\$1,059,955)	-2.4%	\$72,361,743	\$75,432,609	(\$3,070,866)	-3.7%
23	2/7/2009	\$62,247,711	\$60,715,019	\$1,532,692	-3.7%	\$18,354,314	\$20,097,338	(\$1,743,025)	-2.7%	\$80,602,025	\$80,812,357	(\$210,333)	-3.5%
24	2/14/2009	\$60,509,056	\$57,093,143	\$3,415,913	-3.3%	\$19,218,078	\$22,179,908	(\$2,961,831)	-3.3%	\$79,727,134	\$79,273,051	\$454,083	-3.3%
25	2/21/2009	\$59,194,623	\$57,627,047	\$1,567,576	-3.0%	\$21,098,199	\$27,230,539	(\$6,132,340)	-4.5%	\$80,292,822	\$84,857,586	(\$4,564,764)	-3.4%
26	2/28/2009	\$58,857,216	\$55,591,667	\$3,265,549	-2.7%	\$24,116,924	\$17,016,118	\$7,100,806	-2.8%	\$82,974,140	\$72,607,785	\$10,366,355	-2.7%
27	3/7/2009	\$59,552,257	\$56,837,481	\$2,714,776	-2.4%	\$23,995,136	\$16,690,193	\$7,304,943	-1.1%	\$83,547,393	\$73,527,674	\$10,019,719	-2.1%
28	3/14/2009	\$53,754,084	\$54,587,112	(\$833,028)	-2.4%	\$18,769,831	\$16,448,165	\$2,321,667	-0.6%	\$72,523,915	\$71,035,277	\$1,488,639	-1.9%
29	3/21/2009	\$52,581,107	\$53,098,937	(\$517,830)	-2.3%	\$15,903,038	\$16,639,184	(\$736,146)	-0.7%	\$68,484,145	\$69,738,121	(\$1,253,976)	-1.9%
30	3/28/2009	\$52,560,961	\$53,933,689	(\$1,372,728)	-2.3%	\$16,094,933	\$17,698,625	(\$1,603,692)	-1.0%	\$68,655,894	\$71,632,314	(\$2,976,420)	-2.0%
31	4/4/2009		\$57,598,982				\$17,665,411				\$75,264,393		
32	4/11/2009		\$53,954,185				\$15,860,784				\$69,814,969		
33	4/18/2009		\$53,946,736				\$16,452,676				\$70,399,412		
34	4/25/2009		\$51,533,006				\$16,873,949				\$68,406,955		
35	5/2/2009		\$53,250,568				\$18,202,103				\$71,452,671		
36	5/9/2009		\$54,060,849				\$18,422,562				\$72,483,411		
37	5/16/2009		\$54,010,641				\$20,728,360				\$74,739,001		
38	5/23/2009		\$50,377,032				\$15,461,384				\$65,838,416		
39	5/30/2009		\$49,545,080				\$15,175,370				\$64,720,450		
40	6/6/2009		\$53,702,986				\$15,982,166				\$69,685,152		

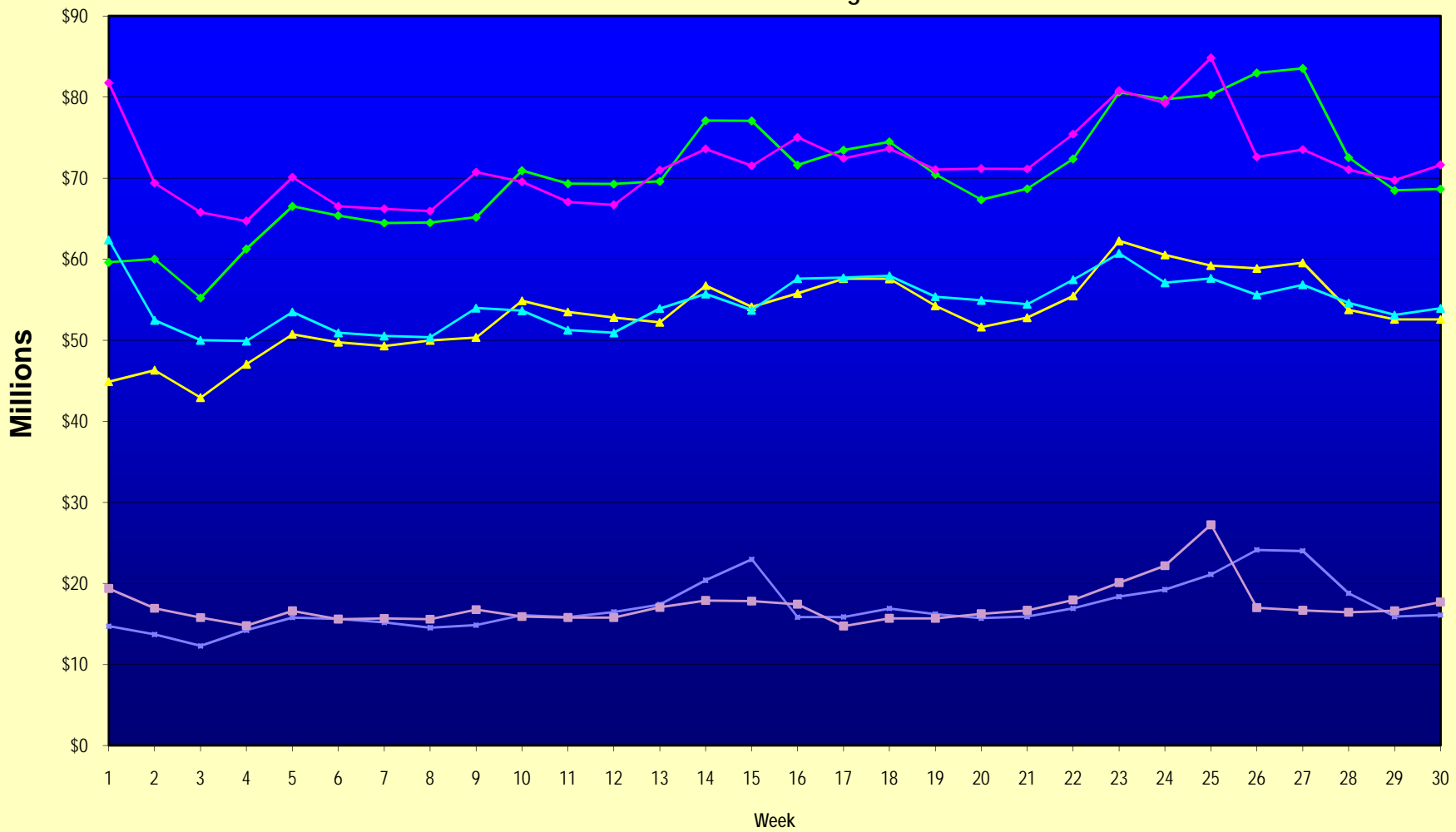
Note: Week 1 is not a full week of sales as this report is prepared on a Fiscal Year basis.

Texas Lottery Commission
Fiscal Year Over Year Change in Sales
Unaudited
FY 2009 Compared to FY 2008

Week	FY 2009 Week Ending	INSTANT TICKETS				ON-LINE GAMES				TOTAL SALES			
		FY 2009	FY 2008	Difference	% change - Cumulative Sales	FY 2009	FY 2008	Difference	% change - Cumulative Sales	FY 2009	FY 2008	Difference	% change - Cumulative Sales
41	6/13/2009		\$51,171,483				\$16,589,087				\$67,760,570		
42	6/20/2009		\$50,650,362				\$15,728,484				\$66,378,846		
43	6/27/2009		\$49,258,266				\$15,250,905				\$64,509,171		
44	7/4/2009		\$53,393,355				\$16,270,619				\$69,663,974		
45	7/11/2009		\$53,127,756				\$16,914,922				\$70,042,678		
46	7/18/2009		\$51,593,146				\$17,752,738				\$69,345,884		
47	7/25/2009		\$49,902,181				\$16,706,145				\$66,608,326		
48	8/1/2009		\$49,605,420				\$16,254,383				\$65,859,803		
49	8/8/2009		\$50,961,907				\$16,770,496				\$67,732,403		
50	8/15/2009		\$49,452,511				\$16,749,487				\$66,201,998		
51	8/22/2009		\$49,249,518				\$17,286,302				\$66,535,820		
52	8/29/2009		\$49,468,928				\$18,109,997				\$67,578,925		
53	9/5/2009		\$6,054,239				\$493,109				\$6,547,348		
Total thru Current Week		\$1,599,826,044	\$1,637,966,958	(\$38,140,914)	-2.3%	\$510,787,634	\$515,940,427	(\$5,152,793)	-1.0%	\$2,110,613,678	\$2,153,907,385	(\$43,293,707)	-2.0%
Fiscal Year Total		\$1,599,826,044	\$2,783,836,095			\$510,787,634	\$887,641,858			\$2,110,613,678	\$3,671,477,953		

** FY 2009 includes 6 days; FY 2008 includes 8 days
FY 2009 average daily sales are \$9,242,258. Two days at average daily sales are \$18,484,516.

Texas Lottery Commission Fiscal Year Over Year Change in Sales



Note: Week 1 is not a full week of sales as this report is prepared on a Fiscal Year basis.

Texas Lottery Commission
Instant Tickets by Price Point
Sales, Prize Expense, Sales Contribution and Payout Percentage With Year Over Year Changes
Unaudited

Fiscal Year	Price Point	# of Active Games	FY Sales	% of Instant Ticket Sales	Year over Year Change in Sales	FY Prize Expense	Year over Year Change in Prize Expense	FY Sales Contribution	Year over Year Change in Contribution	Average Prize Payout %	Year over Year Change in Payout %
2008	\$1.00	41	\$137,583,471	8.4%		\$82,680,491		\$54,902,980		60.1%	0.0%
thru	\$2.00	46	\$268,347,562	16.4%		\$174,646,647		\$93,700,915		65.1%	0.4%
3/29/2008	\$3.00	15	\$138,941,088	8.5%		\$91,336,135		\$47,604,953		65.7%	-0.1%
	\$5.00	42	\$459,374,505	28.0%		\$311,008,798		\$148,365,707		67.7%	-0.4%
	\$7.00	11	\$101,181,731	6.2%		\$68,811,190		\$32,370,541		68.0%	0.1%
	\$10.00	18	\$248,405,476	15.2%		\$172,604,589		\$75,800,887		69.5%	-1.4%
	\$20.00	7	\$102,129,900	6.2%		\$73,451,604		\$28,678,296		71.9%	-0.1%
	\$25.00	2	\$46,473,975	2.8%		\$33,742,970		\$12,731,005		72.6%	0.3%
	\$30.00	3	\$38,115,150	2.3%		\$27,588,627		\$10,526,523		72.4%	0.2%
	\$50.00	2	\$97,414,100	5.9%		\$70,281,312		\$27,132,788		72.1%	0.0%
Total		187	\$1,637,966,958			\$1,106,152,362		\$531,814,596		67.5%	
2009	\$1.00	39	140,960,530	8.8%		84,766,754		56,193,776		60.1%	0.1%
thru	\$2.00	36	276,963,967	17.3%		180,422,930		96,541,037		65.1%	-0.2%
3/28/2009	\$3.00	15	167,607,573	10.5%		110,122,351		57,485,222		65.7%	0.0%
	\$5.00	40	492,002,059	30.8%		334,606,157		157,395,902		68.0%	0.1%
	\$7.00	7	79,578,695	5.0%		54,118,087		25,460,608		68.0%	0.0%
	\$10.00	18	224,580,470	13.9%		157,140,745		67,439,725		70.0%	0.0%
	\$20.00	8	145,249,700	9.1%		104,223,167		41,026,533		71.8%	0.0%
	\$25.00	1	2,372,400	0.2%		1,725,581		646,819		72.7%	0.2%
	\$30.00	3	10,026,150	0.6%		7,265,319		2,760,832		72.5%	0.1%
	\$50.00	3	60,484,500	3.8%		43,717,345		16,767,155		72.3%	0.2%
Total		170	\$1,599,826,044			\$1,078,108,435		\$521,717,609		67.4%	-0.4%
Variance	\$1.00	-2	3,377,059		2.5%	2,086,263	2.5%	1,290,796	2.4%	0.04%	
2009 to	\$2.00	-10	8,616,405		3.2%	5,776,283	3.3%	2,840,122	3.0%	0.06%	
2008	\$3.00	0	28,666,485		20.6%	18,786,216	20.6%	9,880,269	20.8%	-0.03%	
	\$5.00	-2	32,627,554		7.1%	23,597,359	7.6%	9,030,195	6.1%	0.31%	
	\$7.00	-4	-21,603,036		-21.4%	-14,693,103	-21.4%	-6,909,933	-21.3%	0.00%	
	\$10.00	0	-23,825,006		-9.6%	-15,463,844	-9.0%	-8,361,162	-11.0%	0.49%	
	\$20.00	1	43,119,800		42.2%	30,771,563	41.9%	12,348,237	43.1%	-0.17%	
	\$25.00	-1	-44,101,575		-94.9%	-32,017,389	-94.9%	-12,084,186	-94.9%	0.13%	
	\$30.00	0	-28,089,000		-73.7%	-20,323,308	-73.7%	-7,765,692	-73.8%	0.08%	
	\$50.00	1	-36,929,600		-37.9%	-26,563,967	-37.8%	-10,365,633	-38.2%	0.13%	
Total		-17	-\$38,140,914		-2.3%	-\$28,043,927	-2.5%	-\$10,096,987	-1.9%	-0.14%	

Texas Lottery Commission
Instant Tickets by Price Point
Sales, Prize Expense, Sales Contribution and Payout Percentage With Year Over Year Changes
Unaudited

Notes - Instant Ticket Variances

		FY 2009		FY 2008		Difference
Sales	\$1 - \$7		\$1,157,112,824		\$1,105,428,357	\$51,684,467
Prize Exp.	\$1 - \$7		\$764,036,279		\$728,483,261	\$35,553,018
Sales Cont.	\$1 - \$7		\$393,076,545		\$376,945,096	\$16,131,449
Prize Exp. %	\$1 - \$7		66.0%		65.9%	0.1%
		FY 2009		FY 2008		Difference
Sales	\$10 - \$50		\$442,713,220		\$532,538,601	-\$89,825,381
Prize Exp.	\$10 - \$50		\$314,072,156		\$377,669,101	-\$63,596,945
Sales Cont.	\$10 - \$50		\$128,641,064		\$154,869,500	-\$26,228,436
Prize Exp. %	\$10 - \$50		70.9%		70.9%	0.0%
		FY 2009		FY 2008		Difference
Sales	Instant		\$1,599,826,044		\$1,637,966,958	-\$38,140,914
Prize Exp.	Instant		\$1,078,108,435		\$1,106,152,362	-\$28,043,927
Sales Cont.	Instant		\$521,717,609		\$531,814,596	-\$10,096,987
Prize Exp. %	Instant		67.4%		67.5%	-0.1%

		FY 2009		FY 2008		Difference
Sales	\$1 - \$10		\$1,381,693,294		\$1,353,833,833	\$27,859,461
Prize Exp.	\$1 - \$10		\$921,177,024		\$901,087,850	\$20,089,174
Sales Cont.	\$1 - \$10		\$460,516,270		\$452,745,983	\$7,770,287
Prize Exp. %	\$1 - \$10		66.7%		66.6%	0.1%
		FY 2009		FY 2008		Difference
Sales	\$20 - \$50		\$218,132,750		\$284,133,125	-\$66,000,375
Prize Exp.	\$20 - \$50		\$156,931,411		\$205,064,512	-\$48,133,101
Sales Cont.	\$20 - \$50		\$61,201,339		\$79,068,613	-\$17,867,274
Prize Exp. %	\$20 - \$50		71.9%		72.2%	-0.2%
		FY 2009		FY 2008		Difference
Sales	Instant		\$1,599,826,044		\$1,637,966,958	-\$38,140,914
Prize Exp.	Instant		\$1,078,108,435		\$1,106,152,362	-\$28,043,927
Sales Cont.	Instant		\$521,717,609		\$531,814,596	-\$10,096,987
Prize Exp. %	Instant		67.4%		67.5%	-0.1%

Texas Lottery Commission
Weekly Sales Summary
& Comparison to Previous Week
 Unaudited

	Week Ending 03/28/2009	% of Sales	Week Ending 03/21/2009	% of Sales	\$ change	% change
	<u>THIS WEEK</u>		<u>LAST WEEK</u>			
Total Sales	<u>\$68,655,894</u>		<u>\$68,484,145</u>		<u>\$171,749</u>	0.25%
Instant Tickets	<u>\$52,560,961</u>	76.6%	<u>\$52,581,107</u>	76.8%	<u>-\$20,146</u>	-0.04%
Lotto Texas	\$3,486,731	5.1%	\$3,437,818	5.0%	\$48,913	1.42%
Pick 3	\$5,633,455	8.2%	\$5,776,042	8.4%	-\$142,587	-2.47%
Pick 3 Sum It Up	\$114,270	0.2%	\$117,294	0.2%	-\$3,025	-2.58%
Cash 5	\$1,381,550	2.0%	\$1,399,720	2.0%	-\$18,170	-1.30%
Texas Two Step	\$901,673	1.3%	\$880,620	1.3%	\$21,053	2.39%
Mega Millions	\$2,845,499	4.1%	\$2,595,785	3.8%	\$249,714	9.62%
Megaplier	\$701,971	1.0%	\$653,517	1.0%	\$48,454	7.41%
Daily 4	\$925,094	1.3%	\$934,185	1.4%	-\$9,092	-0.97%
Daily 4 Sum It Up	\$104,692	0.2%	\$108,058	0.2%	-\$3,366	-3.12%
Total Online Sales	<u>\$16,094,933</u>		<u>\$15,903,038</u>		<u>\$191,895</u>	1.21%

* Totals may not sum due to rounding.

Texas Lottery Commission
Weekly Sales Summary
Unaudited

INSTANT TICKETS
TOP TEN SELLING GAMES

For the Week Ending : 03/28/2009

Rank	Price Point	Game	Sales (Millions)
1	\$ 5	EXTREME 8'S	\$ 2.886
2	\$ 10	PRECIOUS JEWELS	\$ 2.649
3	\$ 3	BONUS CASHWORD	\$ 2.645
4	\$ 10	STACKS OF CASH	\$ 2.592
5	\$ 5	3 OF A KIND	\$ 2.360
6	\$ 7	DAZZLIN' DIAMOND 7'S	\$ 2.175
7	\$ 20	SUPER SET FOR LIFE	\$ 1.979
8	\$ 5	BUST THE BANK	\$ 1.958
9	\$ 10	SET FOR LIFE	\$ 1.660
10	\$ 5	POT O'GOLD	\$ 1.638

Texas Lottery Commission
Prize Payout Tracking Report
Unaudited

Through Week Ending 03/28/2009

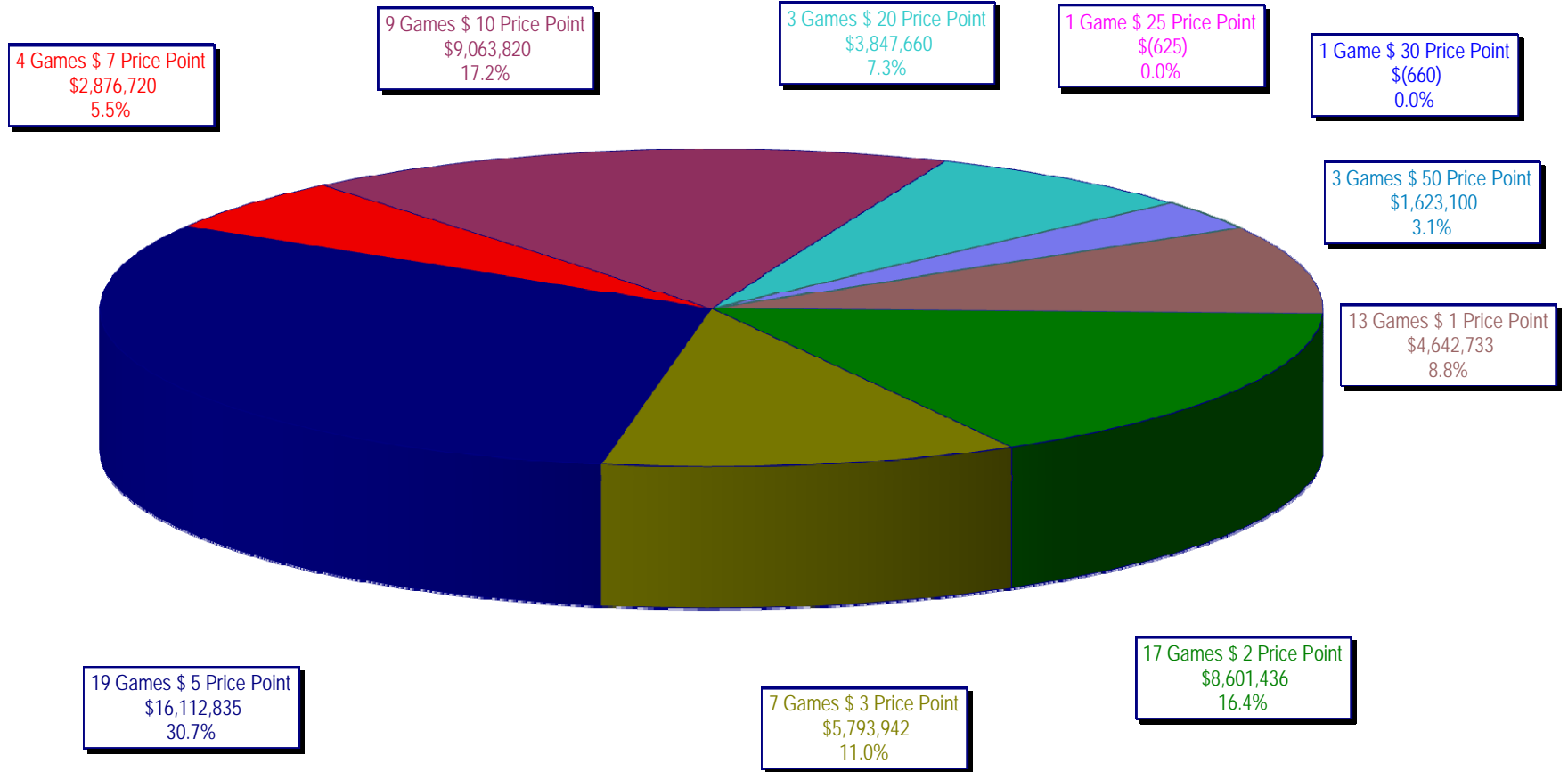
On-Line Sales

		FY Sales Through Week Ending 3/28/2009		FY Prize Expense Through Week Ending 3/28/2009	Actual* Prize Payout	Base Payout (Prize Pool)
Lotto	\$	110,552,205	\$	55,379,222	50.09%	50.00%
Pick 3		165,601,500		82,585,600	49.87%	50.00%
Pick 3 Sum It Up		3,489,517		1,572,979	45.08%	50.00%
Cash 5		41,289,616		20,747,827	50.25%	50.00%
Texas Two-Step		29,960,363		16,205,377	54.09%	50.00%
Mega Millions		106,438,811		52,448,653	49.28%	50.00%**
Megaplier		24,640,448		10,418,201	42.28%	N/A
Daily 4		25,639,755		12,353,800	48.18%	50.00%
Daily 4-Sum It Up		3,175,420		1,355,362	42.68%	50.00%
Totals	\$	510,787,634	\$	253,067,021	49.54%	

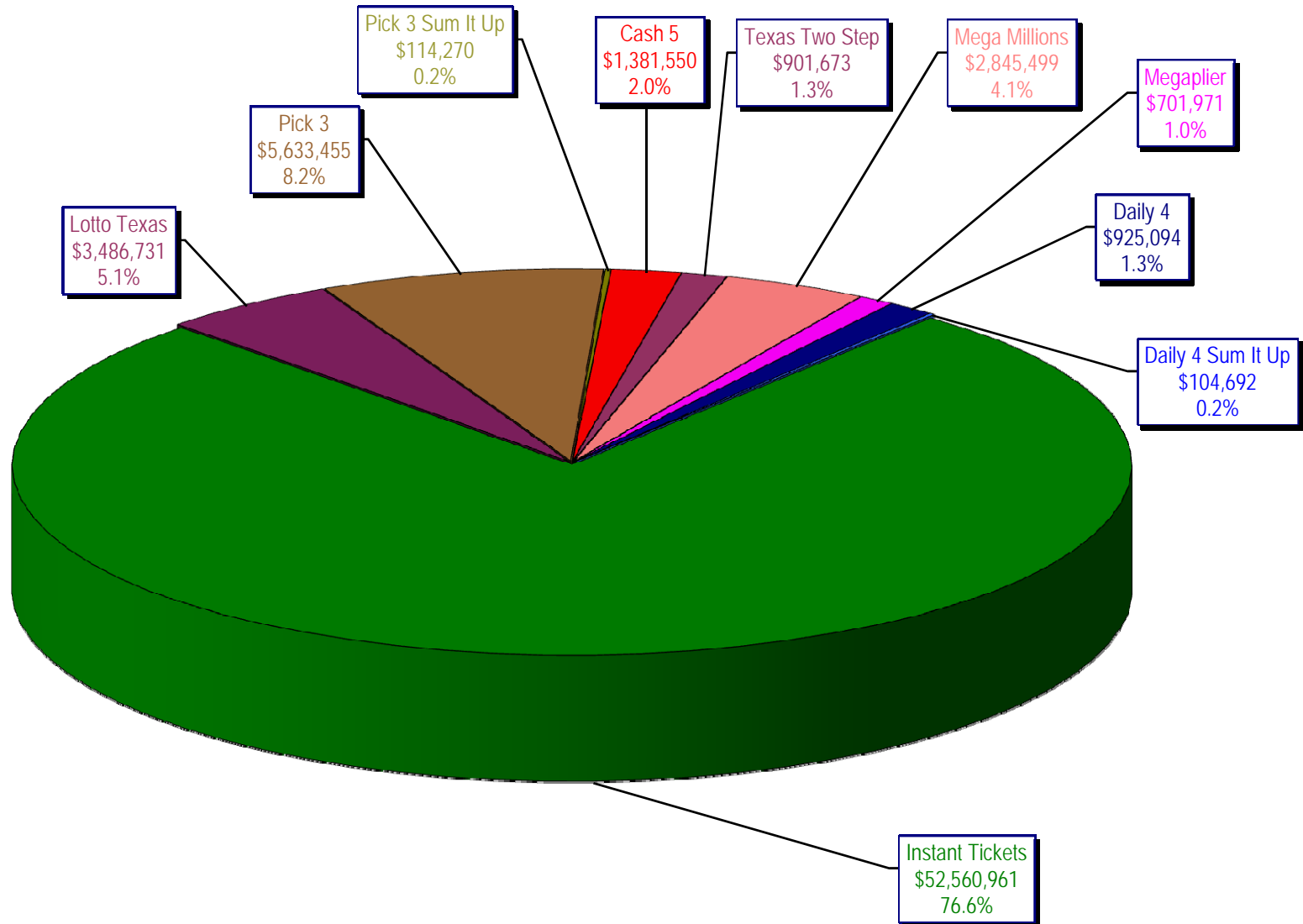
* Before Unclaimed Prizes

** Estimated; depends on # of guaranteed prizes won in Texas

Texas Lottery Commission
 Instant Ticket Sales
 For the Week Ending 03/28/2009
 (Unaudited)



Texas Lottery Commission
All Game Sales
For the Week Ending 03/28/2009
(Unaudited)



Texas Lottery Commission - Weekly Sales Summary for FY 2009 (Unaudited)

Week Ended	Instant Games	New Games & Dates	Lotto Texas	Jackpot		Pick 3	Pick 3 Sum It Up	Cash 5	Texas Two Step	Jackpot		Mega Millions	Jackpot		Megaplier	Daily 4	Daily 4 Sum It Up	Total	Per Cap.
				W	S					M/T	TH/F		T	F					
9/6/2008	50,944,343.00	1108 (\$2,N), 1088 (\$3, N) - 9/01/08	3,378,718.00	5	6	5,436,414.00	122,123.00	1,396,622.00	890,346.00	350	450	2,445,490.00	12	16	649,090.00	786,482.50	109,834.00	66,159,462.50	2.77
9/13/2008	46,309,551.00	1109 (\$1,N), 1098 (\$5, N) - 9/08/08	3,020,089.00	7	8	4,705,585.50	105,899.00	1,279,412.00	856,199.00	600	200	2,327,214.00	24	12	617,672.00	696,633.00	96,156.50	60,014,411.00	2.51
9/20/2008	42,923,171.00	0	3,054,093.00	9	10	4,121,734.50	90,718.00	1,155,350.00	637,792.00	225	250	1,978,127.00	15	12	540,225.00	627,210.00	86,013.50	55,214,434.00	2.31
9/27/2008	47,042,801.00	1111 (\$2,N), 1099 (\$5, N) - 9/22/08	3,427,671.00	11	12	4,821,563.00	103,189.50	1,288,062.00	834,307.00	275	425	2,322,862.00	16	24	617,085.00	709,741.50	97,858.00	61,265,140.00	2.56
10/4/2008	50,747,162.00	1113 (\$1,N) 9/29/08	3,675,683.00	13	14	5,305,711.00	116,332.50	1,369,040.00	1,074,874.00	525	650	2,671,927.00	32	42	693,845.00	770,782.50	106,277.00	66,531,634.00	2.78
10/11/2008	49,763,789.00	0	3,732,365.00	15	16	5,287,094.00	114,665.50	1,370,334.00	1,305,250.00	800	975	2,306,070.00	12	16	622,120.00	778,204.00	106,395.00	65,386,286.50	2.74
10/18/2008	49,299,053.00	1117 (\$3,N), 1118 (\$20,N) - 10/13/08	3,780,438.00	17	18	5,149,258.00	109,530.00	1,355,601.00	741,849.00	200	200	2,500,644.00	23	32	652,198.00	776,366.00	102,056.00	64,466,993.00	2.70
10/25/2008	49,977,581.00	1119 (\$1,N), 1120 (\$5,N) - 10/20/08	3,210,762.00	4	5	5,099,671.00	107,104.50	1,339,079.00	789,649.00	225	275	2,456,965.00	42	12	641,206.00	778,434.00	102,972.50	64,503,424.00	2.70
11/1/2008	50,346,542.00	1121 (\$2,N), 1122 (\$10,N) - 10/27/08	3,325,641.00	6	7	5,234,124.00	109,983.00	1,339,046.00	946,035.00	375	475	2,347,596.00	16	23	626,235.00	805,572.00	104,612.50	65,185,386.50	2.73
11/8/2008	54,860,087.00	1123 (\$3,N), 1124 (\$7,N) - 11/03/08; 1103 (\$3,N) - 11/05/08; 1063 (\$3,N) - 11/07/08	3,290,417.00	4	5	5,686,701.00	118,495.00	1,397,985.00	1,158,101.00	625	750	2,729,302.50	31	42	692,662.00	871,230.00	112,175.50	70,917,156.00	2.97
11/15/2008	53,484,812.00	1125 (\$1, N), 1126 (\$5,N) - 11/10/08	3,336,934.00	6	7	5,459,984.00	112,884.00	1,366,024.00	766,955.00	200	225	3,102,251.00	51	62	749,736.00	830,957.00	104,094.00	69,314,631.00	2.90
11/22/2008	52,806,511.00	0	3,452,481.00	8	9	5,329,591.00	108,861.50	1,358,271.00	743,950.00	200	200	3,666,517.00	73	86	847,201.00	849,077.50	104,797.50	69,267,258.50	2.90
11/29/2008	52,199,741.00	1127 (\$2,N), 1128 (\$5,N) - 11/24/08	3,585,374.00	10	11	5,340,783.50	111,443.00	1,315,233.00	686,077.00	200	225	4,441,715.00	96	111	968,906.00	845,475.50	102,569.00	69,597,317.00	2.91
12/6/2008	56,731,851.00	0	3,794,991.00	12	13	5,752,593.00	121,663.50	1,416,446.00	780,328.00	250	200	6,238,355.00	128	146	1,270,214.00	881,841.50	107,357.00	77,095,640.00	3.23
12/13/2008	54,109,617.00	1129 (\$1, N) - 12/08/08	3,315,658.00	4	5	5,580,770.00	114,295.50	1,384,858.00	766,893.00	225	250	9,150,536.00	170	207	1,691,121.00	846,176.50	101,919.50	77,061,844.50	3.22
12/20/2008	55,777,328.00	1104 (\$2,N), 1105 (\$5,N), 1106 (\$10,N) - 12/15/08	3,432,340.00	6	7	5,741,120.00	116,075.50	1,401,805.00	741,945.00	200	200	2,736,234.00	12	16	687,875.00	871,579.50	104,543.00	71,610,845.00	3.00
12/27/2008	57,597,885.00	1077 (\$1,N), 1110 (\$1,N) - 12/22/08	3,582,169.00	8	4	5,628,081.50	115,323.00	1,340,590.00	708,906.00	225	250	2,842,167.00	22	29	706,042.00	828,346.00	100,146.00	73,449,655.50	3.07
1/3/2009	57,582,115.00	0	3,784,763.00	5	6	5,690,220.50	120,519.50	1,406,807.00	934,000.00	325	525	3,190,457.00	37	46	780,850.00	885,674.00	106,736.50	74,482,142.50	3.12
1/10/2009	54,250,945.00	1135 (\$2,N), 1136 (\$5,N) - 1/5/09	3,582,400.00	7	8	5,476,890.00	116,674.50	1,403,531.00	1,267,847.00	675	900	2,701,275.00	12	16	681,574.00	868,919.00	104,109.50	70,454,165.00	2.95
1/17/2009	51,625,339.00	1137 (\$1,N), 1138 (\$3,N) - 1/12/09	3,668,302.50	9	10	5,443,159.00	112,605.00	1,387,958.00	778,563.00	200	200	2,683,707.00	22	12	675,416.00	852,987.00	98,907.50	67,326,944.00	2.82
1/24/2009	52,789,573.00	1115 (\$2,N), 1116 (\$5,N) - 1/19/09	3,723,835.50	11	12	5,514,547.50	115,827.50	1,376,695.00	860,483.00	225	325	2,692,611.00	16	21	676,936.00	836,996.00	99,541.00	68,687,045.50	2.87
1/31/2009	55,453,471.00	1080 (\$1,N), 1024 (\$20,R) - 1/26/09; 1062 (\$5,N) - 1/28/09	3,837,299.00	13	14	5,700,714.50	121,794.50	1,403,756.00	1,070,879.00	450	600	3,002,883.00	30	40	731,253.00	925,937.50	113,755.50	72,361,743.00	3.03
2/7/2009	62,247,711.00	1035 (\$2,N), 1144 (\$5,N), 1058 (\$10, N) - 2/2/09	4,092,117.00	15	16	6,336,717.00	134,543.00	1,481,812.00	842,746.00	200	225	3,509,032.00	50	60	829,550.00	1,007,529.00	120,267.50	80,602,024.50	3.37
2/14/2009	60,509,056.00	1146 (\$7,N), 1089 (\$1,N) - 2/9/09	4,119,193.00	17	18	6,363,028.00	133,901.50	1,445,616.00	1,013,987.00	325	450	4,082,572.00	73	85	928,813.00	1,010,898.50	120,068.50	79,727,133.50	3.34
2/21/2009	59,194,623.00	1046 (\$2,N), 1140 (\$5,N) - 2/16/09	4,326,401.00	19	20	6,038,807.50	128,493.00	1,439,312.00	1,268,803.00	600	750	5,614,471.00	103	120	1,178,133.00	988,075.00	115,703.50	80,292,822.00	3.36
2/28/2009	58,857,216.00	1132 (\$10,N), 1149 (\$1,N) - 2/23/09	4,526,304.00	21	22	6,084,457.50	128,979.50	1,439,607.00	1,668,414.00	925	1,150	7,676,975.00	145	171	1,504,895.00	973,121.00	114,171.00	82,974,140.00	3.47

Texas Lottery Commission - Weekly Sales Summary for FY 2009 (Unaudited)

Week Ended	Instant Games	New Games & Dates	Lotto Texas	Jackpot		Pick 3	Pick 3 Sum It Up	Cash 5	Texas Two Step	Jackpot		Mega Millions	Jackpot		Megaplier	Daily 4	Daily 4 Sum It Up	Total	Per Cap.
				W	S					M/T	TH/F		T	F					
3/7/2009	59,552,257.00	0	4,928,440.00	23	25	6,133,789.00	128,599.00	1,487,185.00	1,984,358.00	1,350	1,600	6,898,457.00	212	12	1,349,427.00	971,644.50	113,236.00	83,547,392.50	3.50
3/14/2009	53,754,084.00	1139 (\$2.N), 1079 (\$5.N) - 3/09/09	4,752,592.00	26	28	5,850,166.00	120,684.50	1,418,127.00	2,112,571.00	1,900	2,150	2,782,204.00	16	26	698,214.00	925,615.00	109,657.50	72,523,915.00	3.03
3/21/2009	52,581,107.00	1107 (\$1.N), 1154 (\$3.N), 1057 (\$10.N) - 3/16/09; 1102 (\$2.N) - 3/19/09	3,437,818.00	4	5	5,776,041.50	117,294.00	1,399,720.00	880,620.00	200	225	2,595,785.00	12	16	653,517.00	934,185.00	108,057.50	68,484,145.00	2.87
3/28/2009	52,560,961.00	1130 (\$5.N), 1150 (\$10.N) - 3/23/09	3,486,731.00	6	7	5,633,454.50	114,269.50	1,381,550.00	901,673.00	300	200	2,845,499.00	24	34	701,971.00	925,093.50	104,691.50	68,655,894.00	2.87
weekly change	-0.04%		1.42%			-2.47%	-2.58%	-1.30%	2.39%			9.62%			7.41%	-0.97%	-3.12%	0.25%	
SALES																			
Startup to date	35,080,412,046.00		10,389,649,252.00			3,464,320,452.00	9,975,347.00	2,160,445,626.00	456,226,081.00			1,032,577,405.50			242,848,482.00	67,856,726.50	11,514,223.00	53,123,959,613.00	100.0%
Calendar Year to date	698,508,371.00		50,279,960.00			73,160,953.00	175,670.50	17,707,172.00	15,066,944.00			48,620,502.00			10,980,667.00	11,649,068.00	1,373,415.50	927,522,723.00	100.0%
Fiscal Year to date 2009	1,599,826,044.00		110,552,205.00			165,601,499.50	3,489,517.00	41,289,616.00	29,960,363.00			106,438,810.50			24,640,448.00	25,639,755.00	3,175,419.50	2,110,613,677.50	100.0%